

## PART TIME FEES 2009-10

(Part-time fees are paid Monthly)

	5 days	M-Th	MWF	T/Th	drop in	Fun bunch 12-3pm
Toddlers	400.00	N/A	250.00	200.00	25.00	N/A
Twos	400.00	N/A	250.00	200.00	25.00	\$80/mo/day
Threes	400.00	N/A	250.00	200.00	25.00	\$80/mo/day
Fours	375.00	300.00	N/A	N/A	N/A	\$80/mo/day \$24/drop-in

**NON-Refundable Registration Fee\*** \$150 per family

\*May 2010 Tuition is due with registration fee  
(May tuition is refundable with 30 days notice)

**Late Payment Fee** \$5/day (After the 5th of each month)

**Late pick-up fee** \$8 minimum hourly charge

**No coop fee (3 hours/month)** \$20/month per child (billed at end of month)

## FULL TIME FEES 2009

(Full-time fees are paid Weekly)

	5 days	4 days	3 days	2 days	5 -1/2 days	1/2 day DI	Drop-in
Infants	240.00	240.00	180.00	120.00	150.00	30.00	60.00
Toddlers	200.00	200.00	150.00	100.00	125.00	25.00	50.00
Twos	200.00	200.00	150.00	100.00	125.00	25.00	50.00
Three/Fours	175.00	175.00	135.00	90.00	115.00	25.00	45.00
School Age	175.00	175.00	135.00	90.00	115.00	25.00	45.00

**NON-Refundable Registration Fee** \$150 first child, \$50 each additional child

**Vacation Fee** 1/2 of weekly tuition (2 weeks max/year)

**Late payment fee** \$5 a day

**Late pick-up fee (After 5:30pm)** \$1 a minute

**No coop fee (1 hour/month)** \$10 a month per child

**SIBLING DISCOUNT: 5% OFF YOUNGEST CHILD**



### Philosophy

Young children learn through play: active participation in their own learning! If children feel safe and are allowed the freedom to make choices and pursue their own interests and needs, they will learn!

*"Learning is not the product of teaching."*

*John Holt, Learning All the Time*

*"School is about more than intellectual development; it is about learning to become a responsible, caring person who can make good choices and solve problems effectively.*

*This educators must think about ways of helping students to take an active part in decisions that are only indirectly related to academics." Alfie Kohn, Choices for Children,*

*Phi Delta Kappan 1993*

### Mission

Our mission is to promote growth of the whole child in all aspects of their development: creative, physical, social, emotional, language and cognitive. We strive to create confident, creative, independent problem solvers who are comfortable making a friend, resolving conflict and communicating their needs and feelings. We hope children leave our school with the internal motivation to succeed in life, and the knowledge that learning is fun.

*"The coop acts as a kind of bridge. Parents and teachers work together to help children confidently cross from home life into a bigger social setting...a winning arrangement for all involved.*

*Children, parents and teachers each give and receive the support they need to grow and learn."*

*Molly Meyer, PYCS parent*

### Curriculum

Our preschool follows the national standards of quality as defined by the National Association for the Education of Young Children ([www.naeyc.org](http://www.naeyc.org)).

\*We carefully create a safe, interesting, unstructured environment to allow children the creative freedom to make choices and pursue his or her individual interests and needs.

\*The curriculum is open-ended, meaning there is more than one way to use things, to encourage creativity and problem solving.

\*The curriculum is always child-centered or developmentally appropriate which simply means that we, as parents and educators need to think first about what young children are like and then create an environment and experiences that are in tune with children's characteristics.

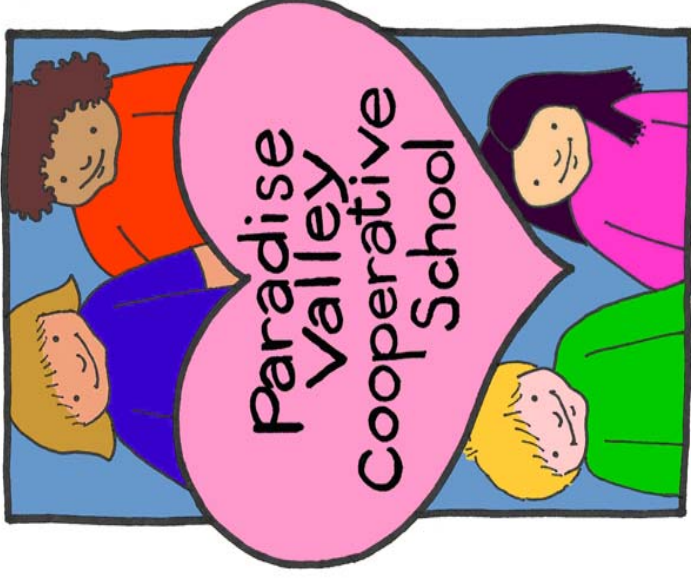
\*Curriculum is personalized. It evolves from the interests, needs and maturity of individual children and is not a set course of study delivered to the children.

\*Curriculum stresses the process of learning and problem solving rather than the acquisition of specific prescribed content. It is designed to build academic skills in such a way that the process enhances personal growth and development

# CAMP FEES 2009

	T/Th	MWF	M-F	Drop-in
<b>9am-12:30pm</b>				
Young Twos (by June 8, 2009)	64.00	N/A	N/A	35.00
Older Twos	N/A	96.00	N/A	35.00
Threes (by June 8, 2009)	64.00	96.00	150.00	35.00
Four-Seven	64.00	96.00	150.00	35.00

**Materials Fee** \$50 per child (NON-REFUNDABLE)  
**Fees are listed as weekly but must be paid by 5th of month**  
**There are 9 weeks of camp beginning June 8th**



## Holidays Closed

New Year's Day      Labor Day  
 M L King Day      Veteran's Day  
 President's Day      Thanksgiving (Thu/Fri)  
 Memorial Day      Christmas Eve  
 Independence Day      Christmas Day  
**Additional Holidays for Part-time Families**  
 2 weeks Winter Break      1 week Spring Break

**Paradise Valley Cooperative School**

**6239 E. Bell Road  
 Scottsdale, AZ 85254**

**Melanie Romero, Director**

**480-948-3330**

**602-738-5124**

[melaniejo@cox.net](mailto:melaniejo@cox.net)

[www.pvcoopschool.com](http://www.pvcoopschool.com)

Paradise Valley Cooperative School is licensed and regulated by the Arizona Department of Health Services (ADHS). The Office of Child Care Licensure is located at 150 N. 18th Ave, Suite 400, Phoenix AZ, 85007. The phone number is 602-364-2539. A copy of the current license is posted on the parent bulletin board. Annual inspection reports are available upon request at the preschool or can be reviewed at the ADHS office. PVCP carries liability insurance.